

the Outsider

01 · September 2021

unconventional metal envelopes for architecture

Interview with
Francine M. J.
Houben

A journey
to the
Netherlands

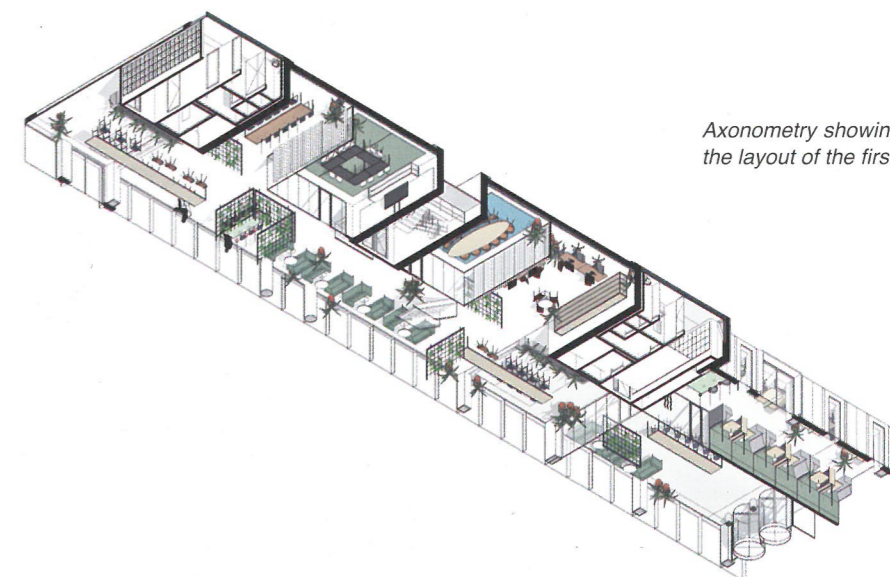
Focus on
Dual Tone
Colours



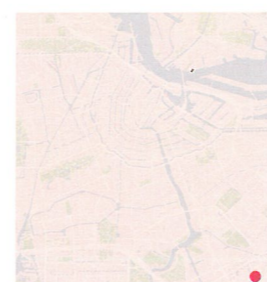
EURAMAX

Renovation of ING Maple

atelier PRO



Axonometry showing the layout of the first floor

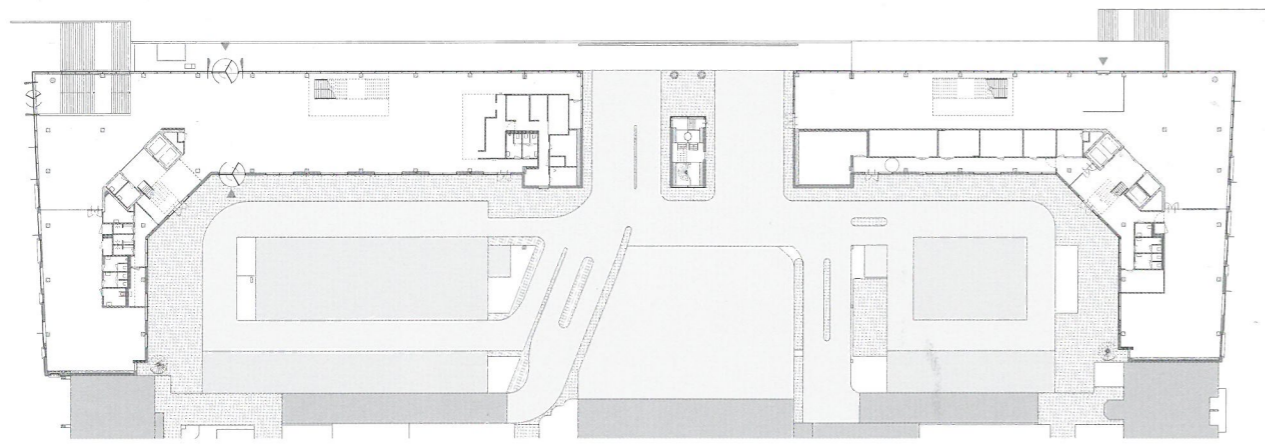


Amsterdam

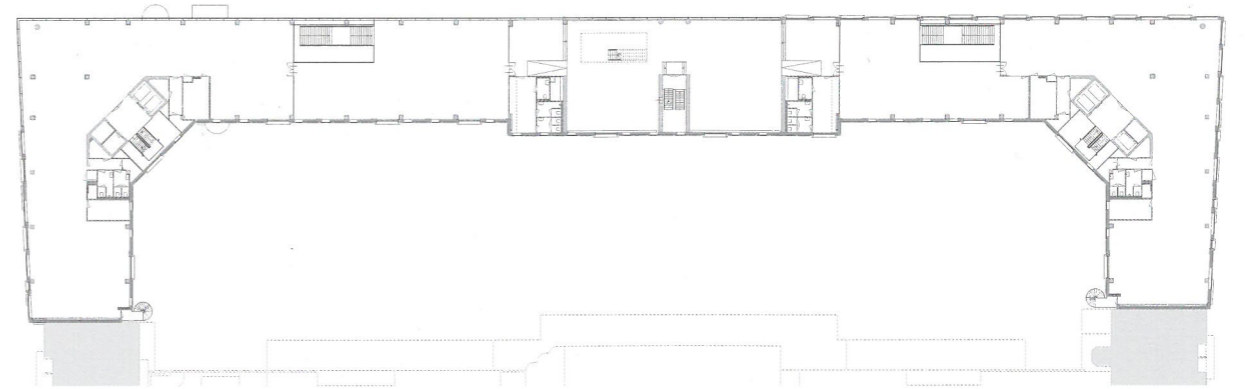
Atelier PRO renovated the ING Bank building, known as Maple, in Amsterdam Zuidoost, an area in the city's south-eastern quadrant. Maintaining the original load-bearing structure, the practice completely reconfigured the 1980s design, originally conceived by Broekbakema practice. The long, horizontal parallelepiped volume with two short side wings features a floorplan of two mirrored sections, parted at ground level to create drive-through access to a parking lot at the rear. On the upper levels, the volumes join together to form integrated floors. Incorporated into its surroundings and connected with other facilities in the vicinity, the building is also linked with a parking garage, a residential block and the Amsterdamse Poort shopping mall. ING's new headquarters is part of the Cumulus Park Innovation District. In partnership with the municipality of Amsterdam, the Amsterdam University of Applied Sciences (AUAS), and the Amsterdam Community

College, ING promoted the Innovation District to give the city a new innovation and research hub. The neighborhood attracts students, businesspeople and residents who have come together to create sustainable solutions that serve the community. The ING headquarters was conceived not just as the bank's offices, but as a vector of innovation and a central hub for local development. Atelier PRO redesigned both the building's interior and exterior, designing the façade after conducting research into a system of protruding and recessed cubes that outline the window frames, and a metal grid of aluminium composite panels mounted upon a fully-glazed, ground-floor volume. Looking out onto Bijlmerdreef boulevard, the building's main façade is in dialogue with green areas across the street. It offers access to the other parts of Cumulus Park, the location of more ING buildings and university sites.

Unless otherwise indicated, photography © René Souverijn, courtesy of atelier PRO



Ground floor plan
Scale 1:1000

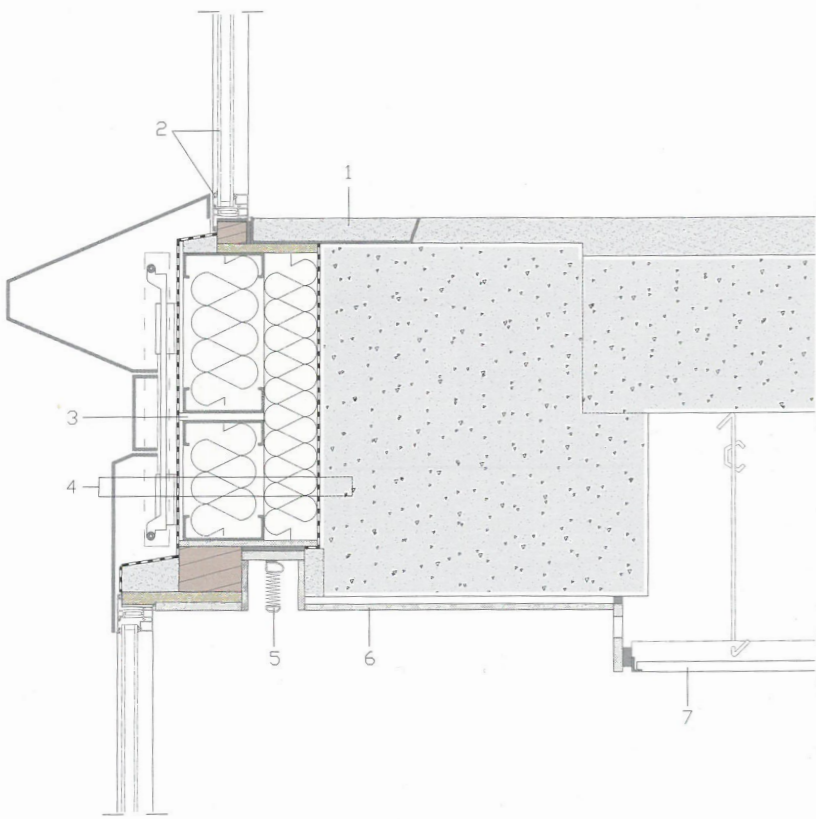


First floor plan
Scale 1:1000





**Façade construction system
Vertical section
Scale 1:30**

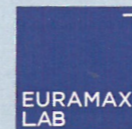


- 1- Repair screed with dovetail joints
- 2- Glazed curtain wall with thermal break aluminium framing
- 3- Expansion joint
- 4- Façade comprising composite aluminium panels, fastening system comprising metal profiles on point fasteners, waterproofing membrane, 5/16" (8 mm) particle fiberboard, 160 x 2" (50 mm) steel C-profile framing with mineral wool insulation, 4 3/4" (120 mm) mineral wool insulation layer, vapor barrier, reinforced concrete beam
- 5- Venetian blinds
- 6- False ceiling comprising 1/2" (12 mm) MDF panels
- 7- Suspended ceiling

A008 Line Pale Brown



More than just an office building, as part of the Cumulus Park Innovation District, the new ING Maple headquarters acts as a relationship hub for the neighborhood and its people.



Jorrit Scheepers
Architectural Advisor Benelux, DACH & Nordics
jscheepers@euramax.eu

Atelier PRO was working on this project with our customer Leebo Intelligente Bouwsystemen trying to find the right finish for the project. During a mutual creative session, the initial thought of the architect - a weathered copper finish - changed to A008 Line Pale Brown. This is a semi-transparent clearcoat applied directly onto the original aluminium substrate. The end result is extremely natural, offering glimpses of the aluminium and its natural reflections.