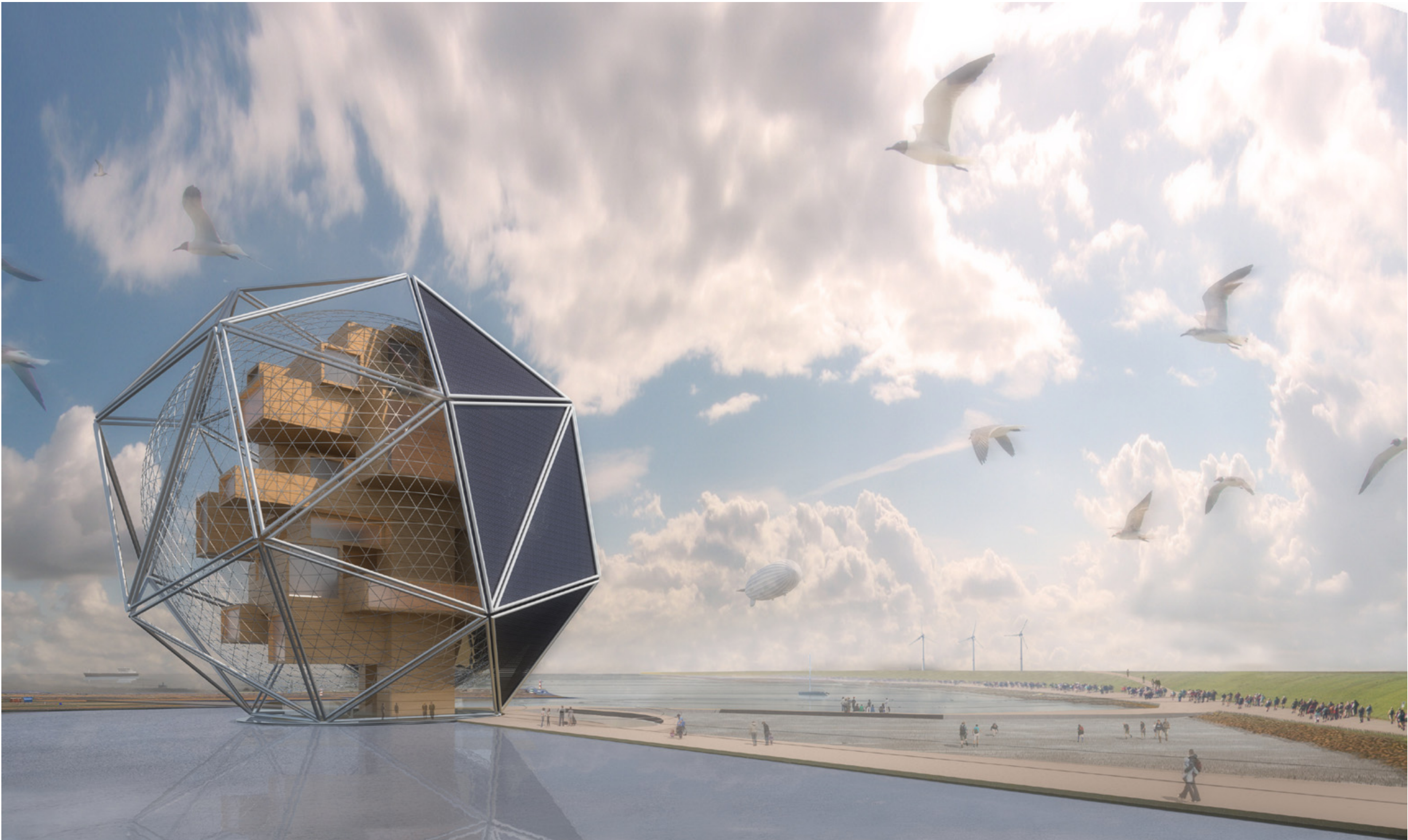


s-cube super sustainable transforming snub-cube

surroundings



building concept

S-Cube is a building which is completely self-sufficient because of its extremely low energy requirements and its ability to generate and store sustainable energy. The building has a divisible and flexible external skin that, depending on the seasons and type of weather, creates optimal conditions for the total energy management and natural ventilation. The external skin is also covered with PV cells for generating energy. Electrical energy is generated and stored through the clever use of tidal effects and the building's ability to float.

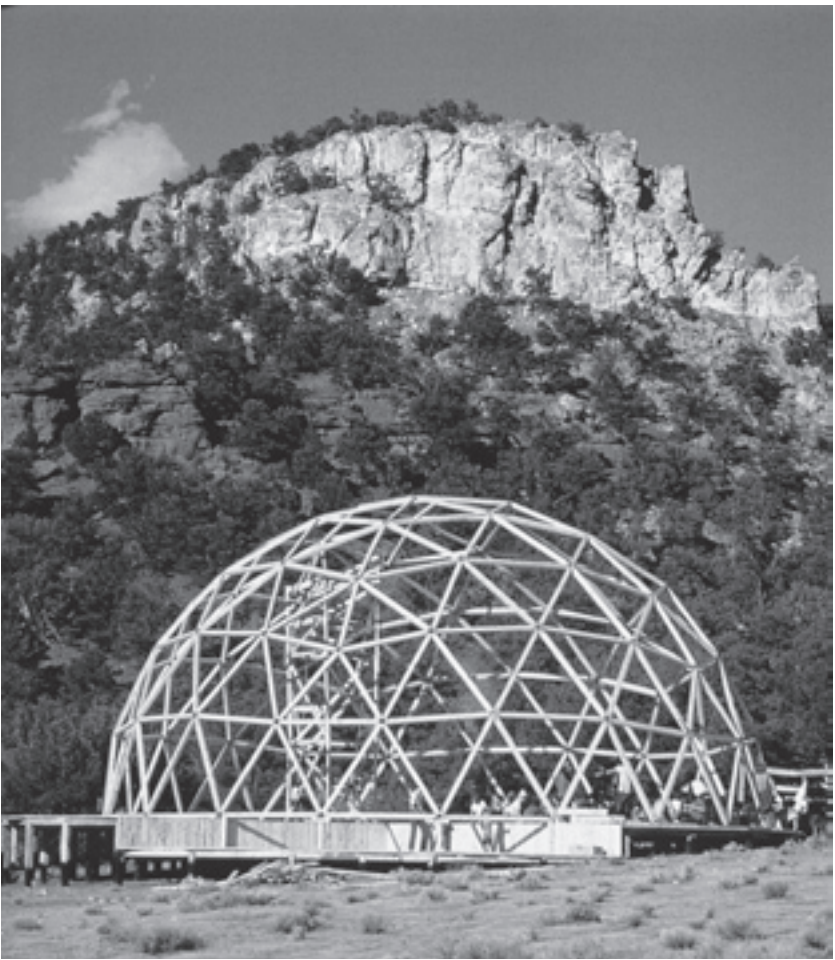
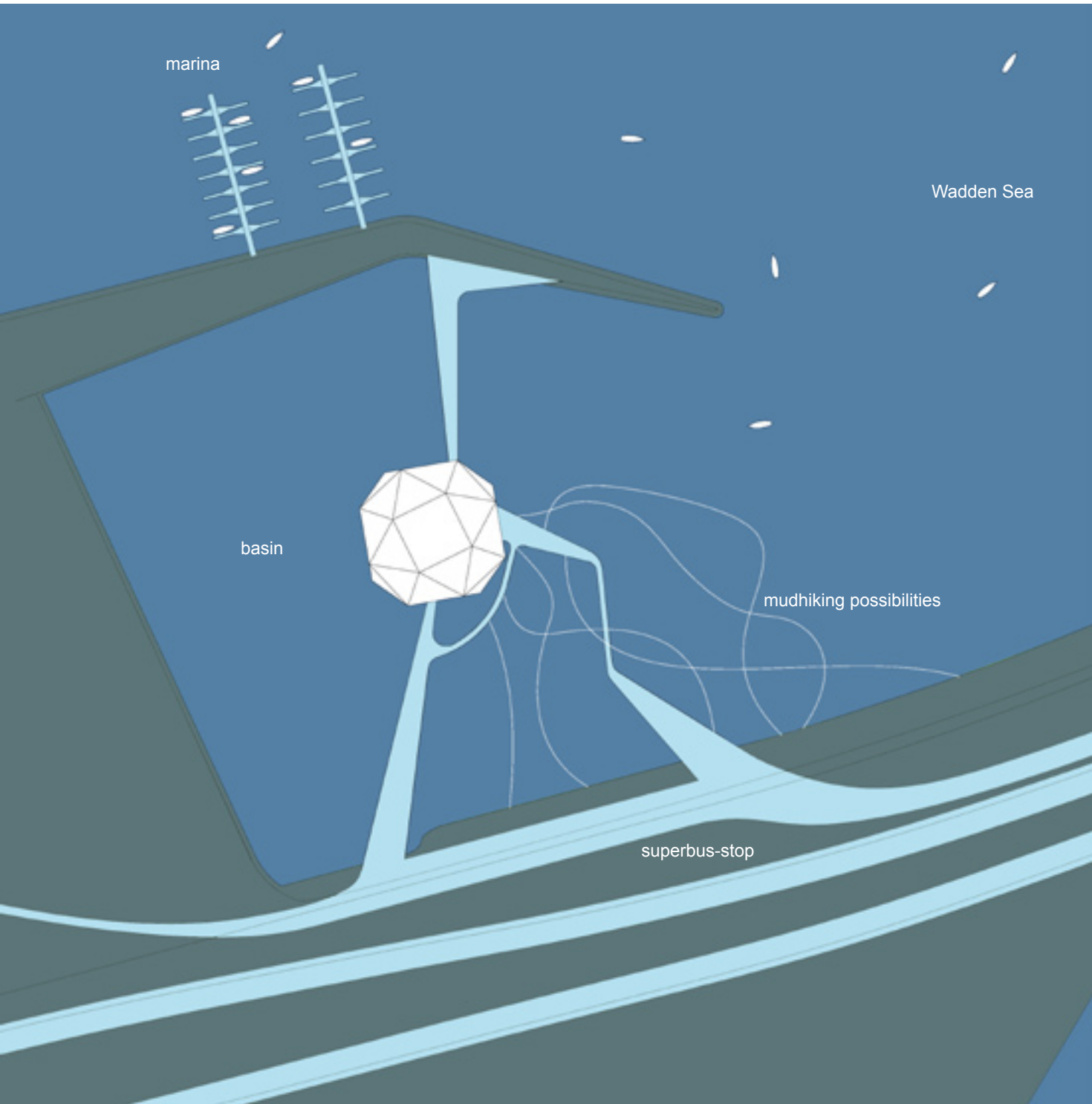
location

The new WSC is located to the east of Kornwerderzand, on the salt water side of the Afsluitdijk. The building lies at some distance from the dike like an island in the water. Its location close to Kornwerderzand means that it can profit from existing, sustainable structures near to the sluices, such as a section of the longitudinal dikes and existing parking facilities.

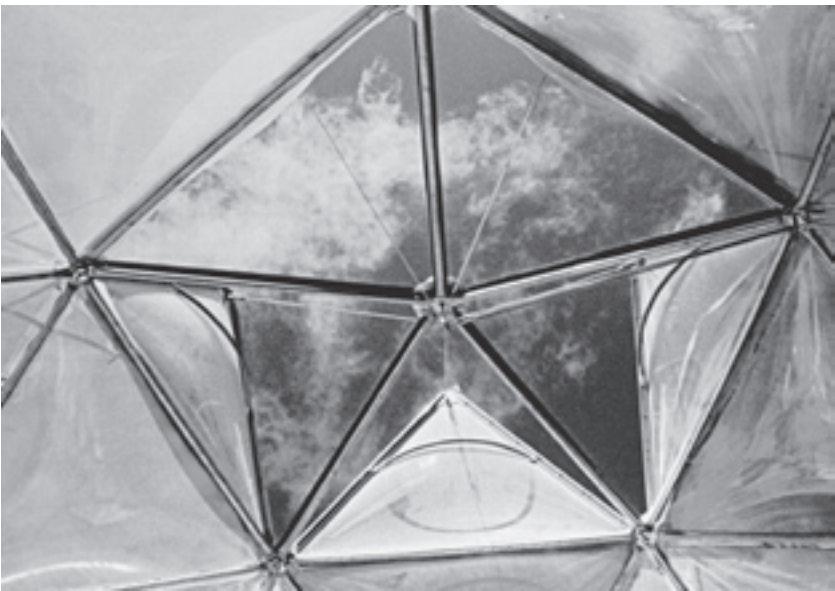
S-cube floats on the edge of a large basin formed by an existing longitudinal dike and a new dam. At high tide the building is completely surrounded by water, while at low tide a large part of the surrounding sandbank stands clear of the

water. The floating WSC is able to withstand all weather conditions and will not suffer from the rise in sea level in the coming decades.

The building is connected to the dike by means of a wide, floating jetty. Boats and pedal boats can moor at certain places on the jetty. The sandbank on one side of the building stands clear of the water at low tide, so that additional routes to the building are created by walking across the mud flats. At such moments the entrance jetty is also partly clear of the water.



geodesic sphere from the sixties ↑



biosphere montreal ↓



mudhiking



S-cube